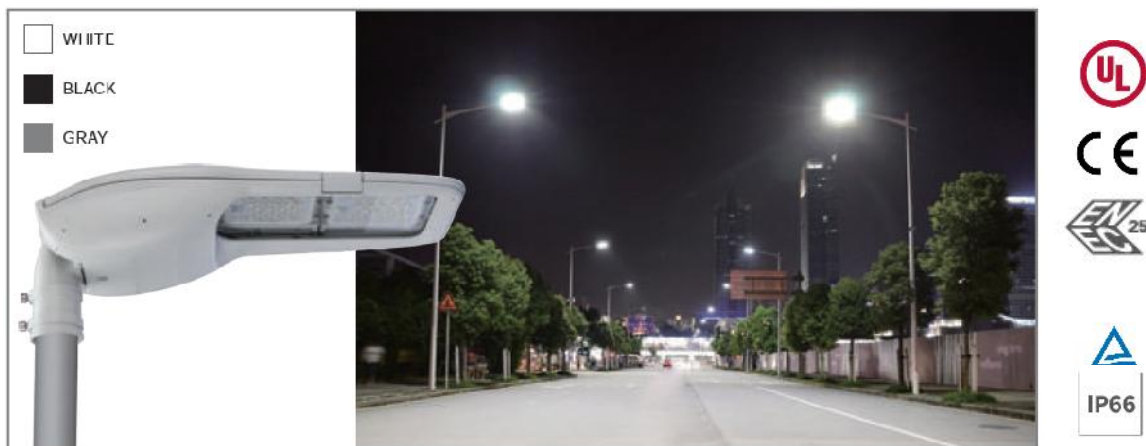


ALUMBRADO PÚBLICO LED IZL-T12A







Características

- Alumbrado Público con IP66, protección a prueba de agua y polvo.
- Vidrio templado resistente IK09
- Normas de fabricación internacional de fábrica
- Fuente de luz de alta eficacia. Opción NEMA fotocel y receptaculo.
- Garantía hasta 10 años

Especificaciones

■ TECHNICAL PARAMETERS

Input Voltage	100-277Vac			
Power factor	0.95			
Available CCT	3000K/4000K/5000K/5700K			
Module Type	M7C-XA series	M7D-XA series	M7C-XB series	M7D-XB series
Photo				
Module Quantity	1	2	4	
Power	40W 50W 60W	80W 100W 120W	160W 200W 240W	
Typical Luminous Efficacy	123lm/W @40W/Engine 117lm/W @50W/Engine 112lm/W @60W/Engine	130lm/W @40W/Engine 125lm/W @50W/Engine 120lm/W @60W/Engine	149lm/W @40W/Engine 144lm/W @50W/Engine 138lm/W @60W/Engine	162lm/W @40W/Engine 156lm/W @50W/Engine 149lm/W @60W/Engine
Lighting distribution	TYPE I TYPE II See lighting distribution options on appendix			
Working Temperature	-40~+50°C			
Installation diameter	55-65mm			

Notes: Tolerance of luminous efficacy value: ±5%~±8%. Efficacy of CCT 3000K is lower than above by 5%.